



5 AXIS Dental Lab
Toll Free: 1-855-695-2947
Two locations Toronto and Whitby

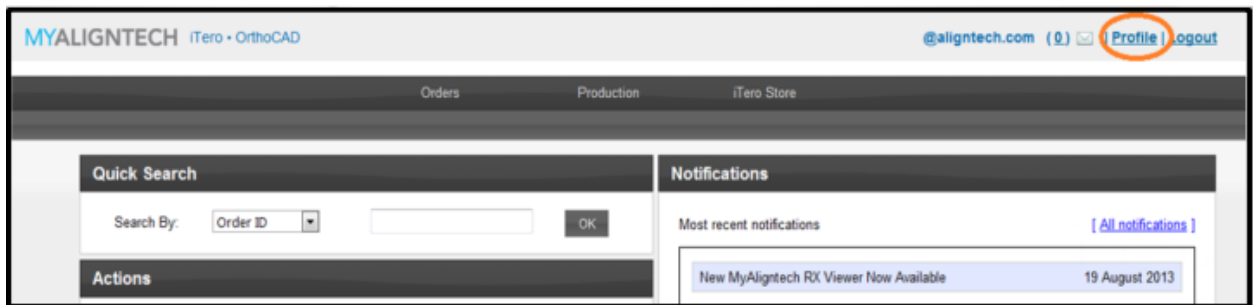
How to add 5 AXIS Scan Bodies to your favorites List

(Only available on 5.1 software upgrade)

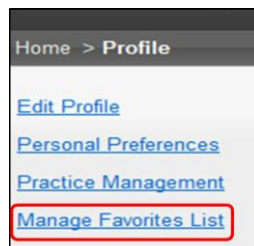
Go to **www.myaligntech.com** and login using your username (email) and password



Click on "Profile" link at the top of the page



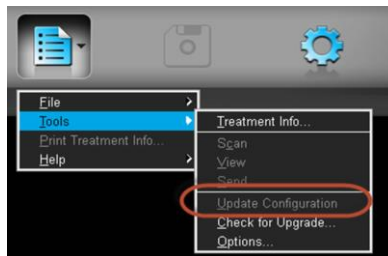
Then click on "manage favorites"



Choose 5 AXIS and populate your list of favorites

When you now log into the iTero software, your favorite scan bodies should appear in your Rx under Scan body – 5 AXIS

If your favorites do not appear in your RX, simply click on Menu-Tools-Update Configuration



For more information about our Products and Services call 416-995-7937
To add 5 AXIS Dental Lab to your scanner Call iTero Customer Support 1-800-577-8767